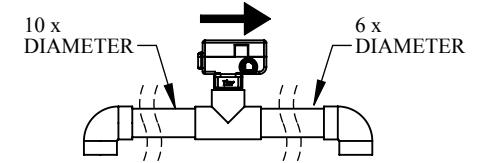
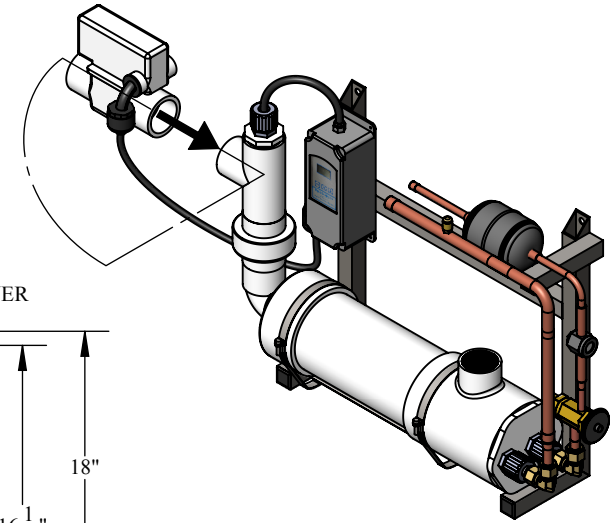
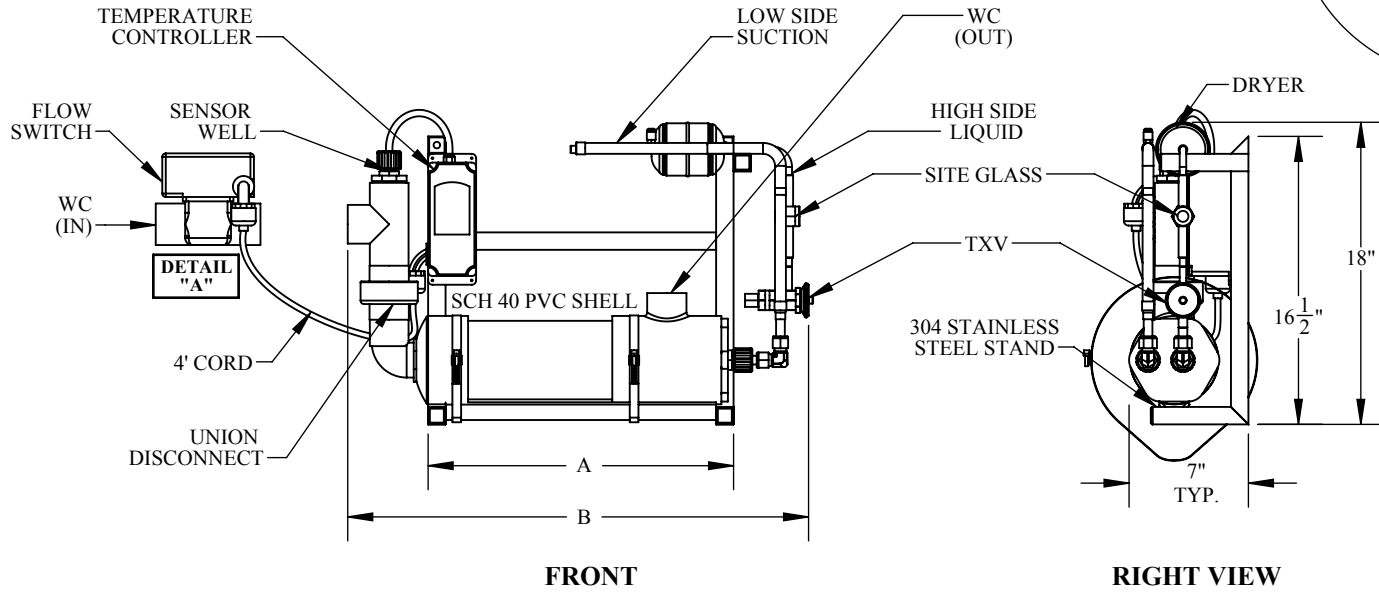


HX-3-DX THRU HX-12-DX SPECIFICATION

FOR INDOOR FRESH AND SALT WATER APPLICATIONS



**** IMPORTANT! ****
DETAIL "A"
 · FLOW SWITCH MUST BE FIELD INSTALLED HORIZONTALLY WITH NO LESS THAN 10 TIMES THE DIAMETER OF STRAIGHT PIPE ON THE INLET SIDE AND NO LESS THAN 6 TIMES THE DIAMETER ON THE OUTLET SIDE.

WC: WATER CONNECTION SIZE

| HEAT EXCHANGER SPECIFICATIONS | | | | | | | | |
|-------------------------------|-----|--------------------|---|-----------------------|---------|-----|-------------------------|---------------------------|
| MODEL NO. | HP | *NOMINAL BTUH / KW | REFRIGERATION CONNECTION HIGH / LOW (ODF) | WATER FLOW RATE (GPM) | A | B | WC WATER IN / OUT (FPT) | SHIPPING DIMENSIONS (IN.) |
| HX-3-DX | 1/4 | 3,000 / .8 | 1/4" / 3/8" | 8 / 15 | 14 1/2" | 23" | 3/4" | 27 x 25 x 12 |
| HX-4-DX | 1/3 | 4,000 / 1.2 | 1/4" / 3/8" | 10 / 20 | 14 1/2" | 25" | 3/4" | 29 x 25 x 12 |
| HX-6-DX | 1/2 | 6,000 / 1.8 | 1/4" / 1/2" | 12 / 25 | 14 1/2" | 26" | 1 1/2" | 30 x 25 x 12 |
| HX-9-DX | 3/4 | 9,000 / 2.6 | 3/8" / 5/8" | 20 / 35 | 17 1/2" | 32" | 1 1/2" | 36 x 25 x 12 |
| HX-12-DX | 1 | 12,000 / 3.5 | 3/8" / 5/8" | 25 / 40 | 17 1/2" | 35" | 1 1/2" | 39 x 25 x 12 |

***NOTE:**

- *NOMINAL BTUH CAN VARY, CONSULT AQUA LOGIC FOR ACCURATE SIZING FOR SPECIFIC APPLICATION.
- BTUH RATING IS BASED ON USE OF R-134A REFRIGERANT.
- FIELD WIRING: INSTALL 24V 18/3 AWG WIRE BETWEEN CONDENSER AND HEAT EXCHANGER.
- ALL DIMENSIONS ARE AN APPROXIMATE AND CAN CHANGE AT ANY TIME.

- OPTIONS:**
- SCH 80 AND CPVC MATERIAL SHELL CONSTRUCTION.
 - 316 STAINLESS STEEL STAND.
 - 316 STAINLESS STEEL HARDWARE.



9558 Camino Ruiz, San Diego, CA 92126

DRAWING # PDF-0138 SHEET TITLE HX-3-DX THRU HX-12-DX SPECIFICATIONS

| | | | | | | |
|---|--|---|--------------------|----------|---------------|-------------------|
| * COPYRIGHT * These drawings including design idea and construction techniques herein are the sole property of Aqua Logic Inc. They shall not be revised, copied, or reproduced in any manner without the written consent of Aqua Logic Inc. | | DESCRIPTION DIRECT EXPANSION HEAT EXCHANGERS | DATE 11/12/2015 | REVISION | SCALE 1:10 | SHEET # 1 OF 1 |
| DRAWN BY Arnaldo Guzman | | | | | | |