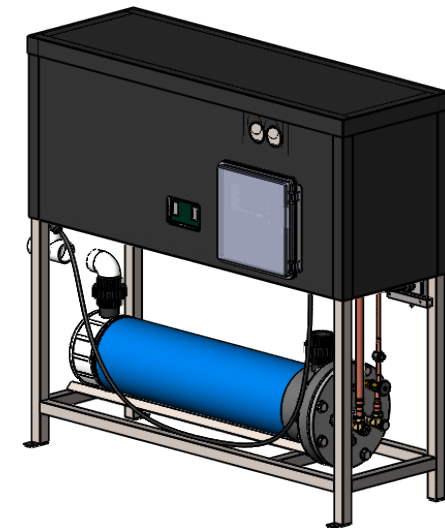
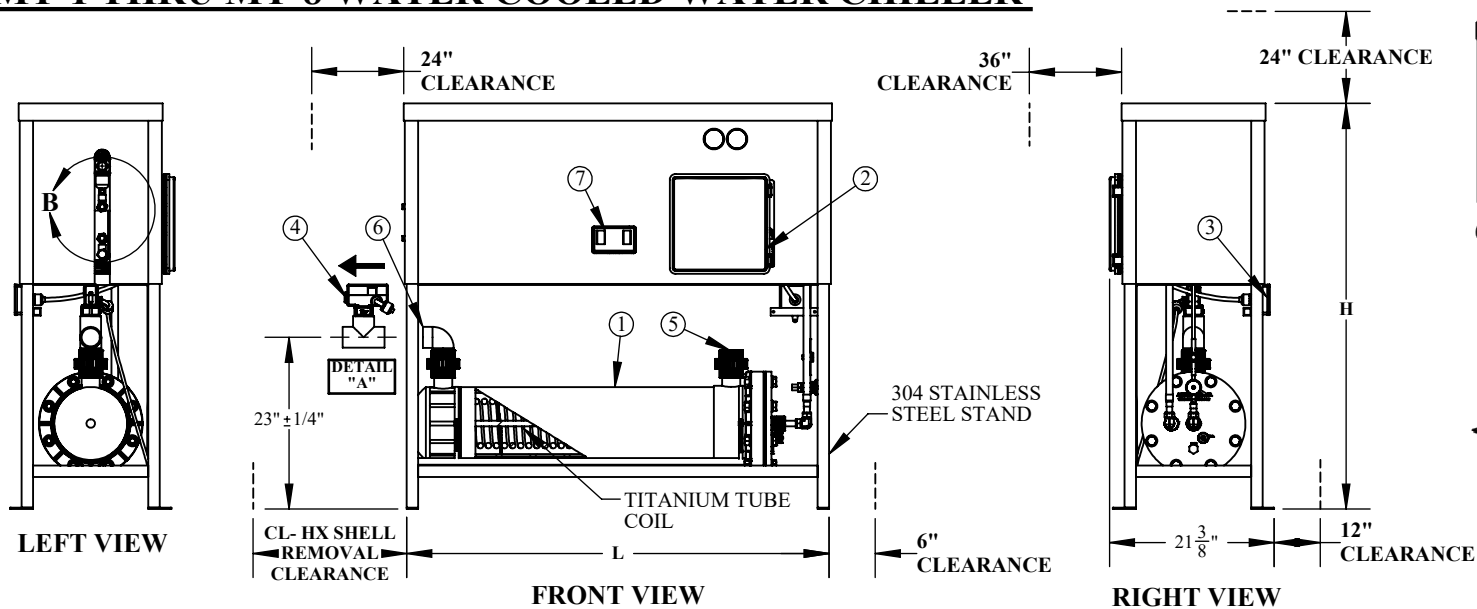
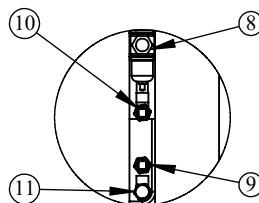


MT-1 THRU MT-8 WATER COOLED WATER CHILLER



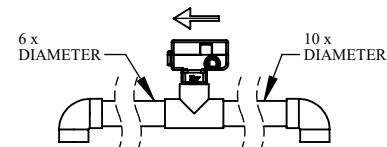
NO.	NAME
1	EVAPORATOR-TITANIUM TUBE / 8" SCH 40 PVC SHELL
2	TEMPERATURE CONTROLLER / NEMA 4X ELECTRICAL CONTROL BOX
3	JUNCTION BOX FOR SUPPLY POWER
4	WATER FLOW SWITCH (SEE NOTE FOR INSTALLATION)
5	2" NPS EVAPORATOR WATER INLET
6	2" NPS EVAPORATOR WATER OUTLET
7	LOW / HI REFRIGERANT PRESSURE SAFETY CUTOUT
8	CONDENSER WATER OUTLET
9	CONDENSER WATER INLET
10	CONDENSER WATER FLUSH OUTLET
11	CONDENSER WATER FLUSH INLET



DETAIL B

NOTES:

- WATER STOPS FLOWING THROUGH THE CONDENSER WHEN THE CHILLER IS IN THE OFF CYCLE.
- WATER FLOW RATE THROUGH THE EVAPORATOR NEEDS TO BE AT THE MAXIMUM FLOW RATE WHEN WATER TEMPERATURE IS 55°F AND BELOW.



**** IMPORTANT!**

- DETAIL "A"
- FLOW SWITCH MUST BE FIELD INSTALLED VERTICALLY ON A HORIZONTAL STRAIGHT PIPE WITH NO LESS THAN 10 TIMES THE PIPE DIAMETER ON THE INLET SIDE AND NO LESS THAN 6 TIMES THE DIAMETER ON THE OUTLET SIDE.

OPTIONS:

- SCH 80 PVC SHELL CONSTRUCTION.
- 316 STAINLESS STEEL STAND AND HEX BOLTS.

MULTI-TEMP WATER-COOLED CHILLERS

MODEL NO.	NOMINAL TONS / BTUH	VOLTS / PHASE	R-410A REFRIGERANT CHARGE LBS / OZ	AMPS RLA / LRA	EVAPORATOR WATER FLOW MIN/MAX *(GPM)	CONDENSER WATER FLOW MIN/MAX *(GPM)	CONDENSER WATER CONNECTIONS SIZE (FPT)	L	H	CL	DRY WEIGHT (LBS.)	SHIPPING WEIGHT (LBS.)	SHIPPING DIMS
MT-1-WC	2 / 24,000	208-240 / 1	3 / 5	13.8 / 127	20 / 40	2 / 4	1/2"	43"	53"	25"	320	415	49" x 31" x 60"
MT-3-WC	3 / 36,000	208-240 / 1	3 / 10	16.6 / 175	20 / 40	2 / 5	1/2"	43"	53"	32"	330	430	49" x 31" x 60"
MT-4-WC	3 / 36,000	208-240 / 3	3 / 10	12.7 / 128	20 / 40	2 / 5	1/2"	43"	53"	32"	330	430	49" x 31" x 60"
MT-4-460-WC	3 / 36,000	460 / 3	3 / 10	7.5 / 63	20 / 40	2 / 5	1/2"	43"	53"	32"	330	430	49" x 31" x 60"
MT-5-WC	4 / 48,000	208-240 / 1	4 / 12	17.3 / 129	30 / 60	3 / 7	3/4"	55"	53"	39"	350	450	62" x 31" x 60"
MT-6-WC	4 / 48,000	208-240 / 3	4 / 12	13 / 156	30 / 60	3 / 7	3/4"	55"	53"	39"	350	450	62" x 31" x 60"
MT-6-460-WC	4 / 48,000	460 / 3	4 / 12	8 / 75	30 / 60	3 / 7	3/4"	55"	53"	39"	350	450	62" x 31" x 60"
MT-7-WC	5 / 60,000	208-240 / 1	7 / 5	23 / 129	30 / 60	4 / 8	3/4"	55"	53"	47"	360	460	62" x 31" x 60"
MT-8-WC	5 / 60,000	208-240 / 3	7 / 5	19.3 / 225	30 / 60	4 / 8	3/4"	55"	53"	47"	360	460	62" x 31" x 60"
MT-8-460-WC	5 / 60,000	460 / 3	7 / 5	9.8 / 114	30 / 60	4 / 8	3/4"	55"	53"	47"	360	460	62" x 31" x 60"

- ALL UNITS ARE 60 HZ.
- CONDENSER FLOW RATE IS BASED ON A MINIMUM OF 55°F AND MAXIMUM OF 75°F WATER TEMPERATURE. CONSULT WITH THE FACTORY IF THE WATER TEMPERATURE IS OUTSIDE THESE PARAMETERS.
- ALL DIMENSIONS ARE APPROXIMATE AND CAN CHANGE AT ANY TIME.

* COPYRIGHT *
These drawings including design idea and construction techniques herein are the sole property of Aqua Logic Inc. They shall not be revised, copied, or reproduced in any manner without the written consent of Aqua Logic Inc.

DESCRIPTION	DRAWN BY	DATE	REVISION	SCALE	SHEET #
MT-1 THRU MT-8 WATER COOLED WATER CHILLER	Arnaldo Guzman	3/24/2022		1:25	1 OF 1

DRAWING # PDF-0060 SHEET TITLE

MT-1 THRU MT-8 SPECIFICATIONS

9558 Camino Ruiz, San Diego, CA 92126

