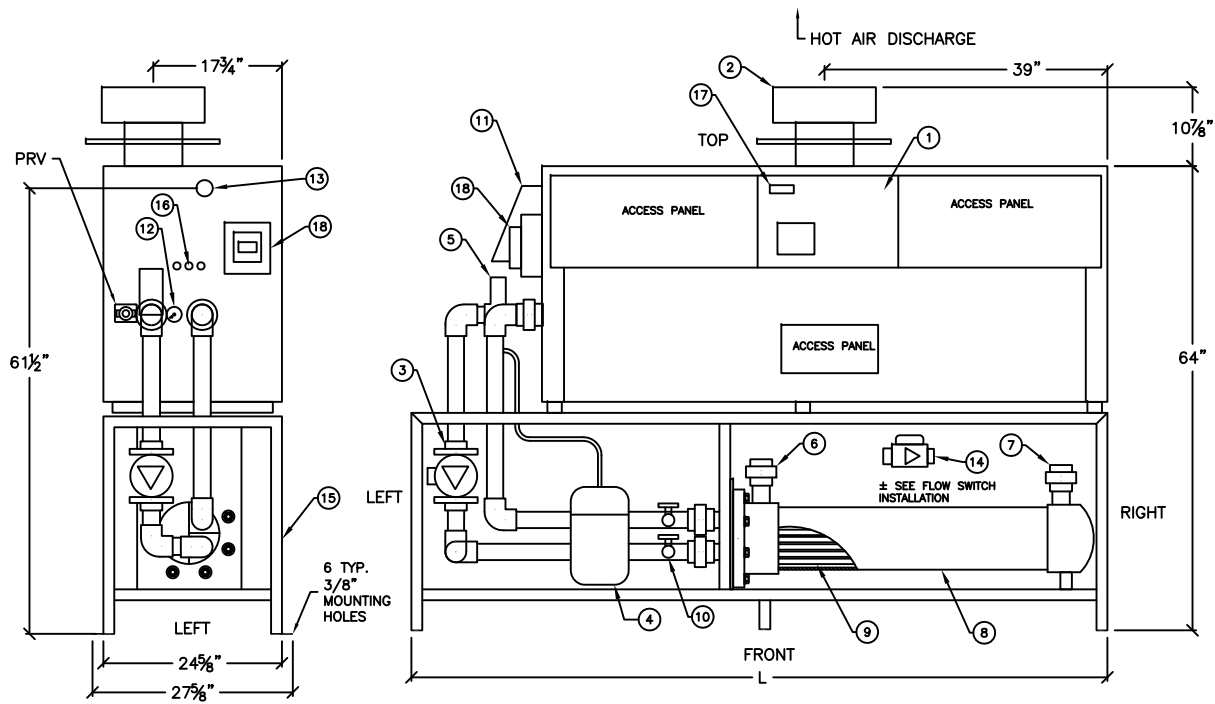


| | | | | | | | | | | | | | | | | |
|---|---|---|---|---|---|---|---|---|----|----|----|----|----|----|----|----|
| 1 | 2 | 3 | 4 | 5 | 6 | 7 | 8 | 9 | 10 | 11 | 12 | 13 | 14 | 15 | 16 | 17 |
|---|---|---|---|---|---|---|---|---|----|----|----|----|----|----|----|----|



| REFERENCE DESCRIPTION | |
|-----------------------|--|
| 1 | BOILER TEMPERATURE CONTROLLERS |
| 2 | OPTIONAL OUTDOOR EXHAUST VENT BOILER CAP |
| 3 | 120 VOLT HOT WATER CIRCULATOR PUMP |
| 4 | HOT WATER BLADDER TANK |
| 5 | BLADDER TANK AIR BLEED |
| 6 | SLIP PROCESS WATER INLET (SEE CHART) |
| 7 | SLIP PROCESS WATER OUTLET (SEE CHART) |
| 8 | SCH 40 CPVC PROCESS HEAT EXCHANGER SHELL |
| 9 | GD2 TITANIUM TUBE BUNDLE WITH 1/2" TUBES |
| 10 | BOILER SYSTEM DRAIN / FILL VALVE |
| 11 | OPTIONAL OUTDOOR COMBUSTION AIR INTAKE COVER |
| 12 | BOILER WATER THERMOMETERS / PRESSURE GAUGES |
| 13 | GAS BOILER CONNECTION (SEE CHART) |
| 14 | SAFETY FLOW SWITCH (PROCESS SIDE) |
| 15 | 304 STAINLESS STEEL STAND |
| 16 | MAIN POWER IN |
| 17 | BOILER DIAGNOSTICS CENTER |
| 18 | POOL TEMPERATURE CONTROLLER |

| ALB SERIES TITANIUM GAS FIRED WATER HEATER PACKAGES | | | | | | | | | | | | | | | |
|---|----------------|-------------|----------------------------------|----------|--|------------------------------------|----------------------|------------|--------------------|-------------------------------|--------|----------|---------|---------|--------------------|
| MODEL | VOLTAGE / AMPS | INPUT MBTUH | IBR NET OUTPUT RATING MBTUH / KW | AFUE (%) | NATURAL GAS CONSUMPTION (Ft ³ /Hr.) | PROPANE GAS (LP) CONSUMPTION (GPH) | GAS CONNECTION (NPT) | FLUE (DIA) | WATER IN/OUT (NPS) | WATER FLOW RATE MINIMUM (GPM) | L (IN) | *L1 (IN) | *W (IN) | *H (IN) | *SHIP WEIGHT (LBS) |
| ALB-420 | 120 / < 10 | 500 | 420 / 122 | 84 | 485 | 5.5 | 1-1/4" | 6 | 2" | 60 | 68 | 72 | 32 | 82 | 1,100 |
| ALB-546 | 120 / < 10 | 650 | 546 / 158 | 84 | 631 | 7.1 | 1-1/4" | 8 | 2" | 60 | 79 | 83 | 32 | 82 | 1,145 |
| ALB-630 | 120 / < 10 | 750 | 630 / 184 | 84 | 728 | 8.2 | 1-1/4" | 8 | 2" | 60 | 86 | 90 | 32 | 82 | 1,225 |
| ALB-756 | 120 / < 10 | 900 | 756 / 220 | 84 | 874 | 9.8 | 1-1/4" | 8 | 2" | 60 | 96 | 100 | 32 | 82 | 1,300 |

| HEATER SIDE | CLEARANCES | | | |
|-------------|------------|---------|---------|---------|
| | INDOOR | | OUTDOOR | |
| | MINIMUM | SERVICE | MINIMUM | SERVICE |
| BACK | 1" | 6" | 12" | 24" |
| LEFT | 12" | 24" | 36" | 36" |
| RIGHT | 1" | 24" | 36" | 36" |
| TOP | 1" | 6" | + | + |
| FRONT | OPEN | 24" | OPEN | 24" |
| VENT | 2" | 2" | N/A | N/A |

+ UNOBSTRUCTED


* APPROXIMATE SHIPPING SIZE AND WEIGHT

± FLOW SWITCH INSTALLATION

NOTES:

FLOW SWITCH MUST BE INSTALLED VERTICAL ON A HORIZONTAL PIPE WITH AT LEAST 20 INCHES OF STRAIGHT PIPE ON THE WATER INLET SIDE AND AT LEAST 12 INCHES OF STRAIGHT PIPE ON THE WATER OUTLET SIDE.

1. ALL HEATERS INCLUDE G1 CSD-1 SAFETY PACKAGE AND IS G-12 CALIFORNIA CODE COMPLAINT.
2. HEATER INPUT AND OUTPUT MUST BE DE-RATED 4% PER 1000 FEET ABOVE SEA LEVEL WHEN INSTALLED ABOVE 4500 FEET ALTITUDE.
3. RECOMMENDED NATURAL GAS PRESSURE IS 7-10.5" WC. FOR PROPANE GAS PRESSURE IS 11-13" WC
4. WARNING: FOR INDOOR VENTING, PVC CANNOT BE USED FOR VENTING.

| | | | | | | | | | | | | |
|-------|--|------------|------------|------|---|------------|------------|--------|-----------|-------|-----|---|
| TITLE | ALB-420 THRU ALB-756 GAS FIRED HEATERS | PROJECT | AQUA LOGIC | FILE | C:\AutoCad Files\Heaters\ALB-420 thru 756 System Heaters 10-13-15.dwg | DRAWING NO | 00 | EDITED | 1/19/2016 | SCALE | 1:1 |  AQUA LOGIC, INC 9558 CAMINO RUIZ, SAN DIEGO, CA. 92126 |
| | CLIENT | AQUA LOGIC | DRAWN BY | | CEPPS | CREATED | 10/12/2015 | PAGE | 1 of 1 | | | |